

Annals of Lymphoma Annual Report (2018)

Editorial Office

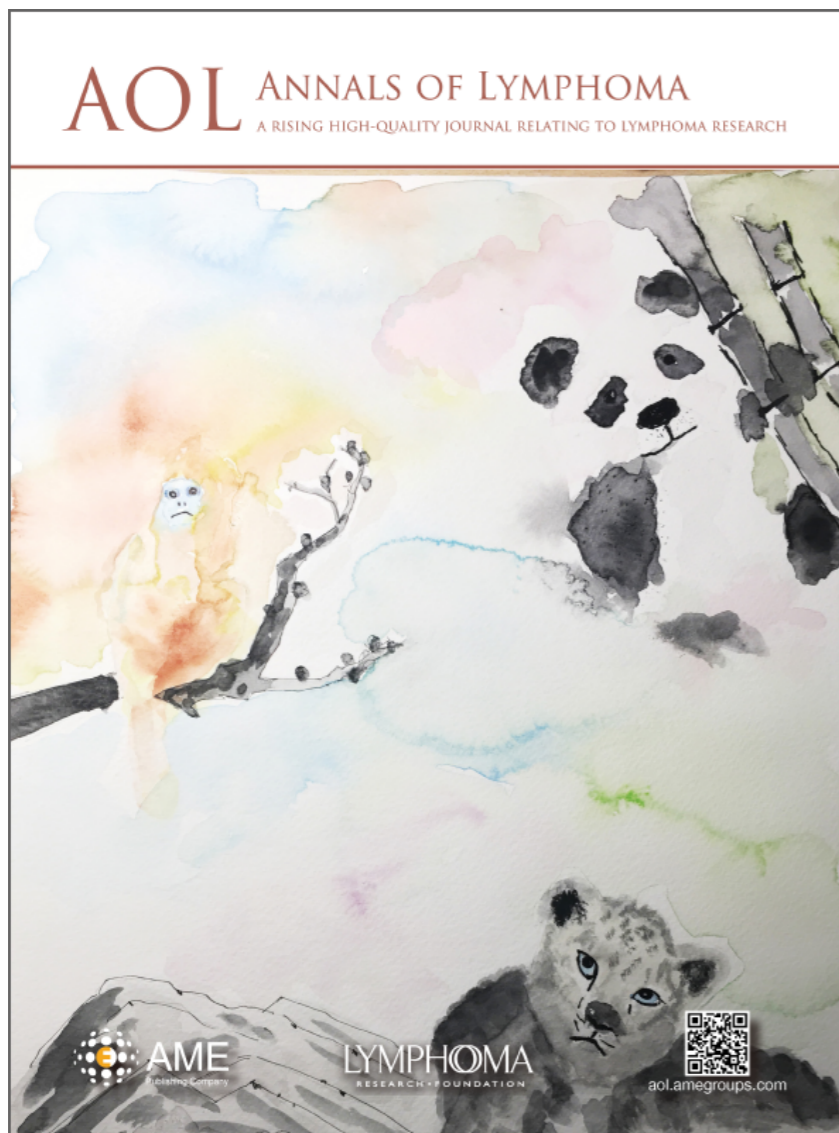
[Email: aol@amegroups.com](mailto:aol@amegroups.com)

[URL: http://aol.amegroups.com/](http://aol.amegroups.com/)

Outline of the Report

1. Basic Information
2. Endorsement
3. Editor-in-Chief
4. Message from the Editor-in-Chief
5. Geographical Distribution of Editorial Board Members
6. Editorial Board Members
7. Article Types of Articles Published in 2018
8. Geographical Distribution of Authors in 2018
9. Website Visits
10. Focused Issues under Progress
11. Upcoming Focused Issues and Guest Editors
12. Introduction of the Publisher AME

1. Basic Information



- Open-access
- Peer-reviewed
- Electronic Publication
- Launched in January 2017
- Endorsed by Lymphoma Research Foundation

Annals of Lymphoma, a new journal that focuses exclusively on this heterogeneous group of diseases we have long referred to as lymphoma. rapidly publishes advances in basic, clinical and translational research into epidemiology, biology, genetics, pathology, treatment and outcomes.

2. Endorsement

News

***Annals of Lymphoma* forms partnership with lymphoma research foundation**

Meghan Gutierrez¹, Bruce D. Cheson²

¹Lymphoma Research Foundation, New York, NY 10005, USA; ²Georgetown University Hospital, Lombardi Comprehensive Cancer Center, Washington, DC, USA

Correspondence to: Meghan Gutierrez. Chief Executive Officer, Lymphoma Research Foundation, Wall Street Plaza, 88 Pine Street, Suite 2400, New York, NY 10005, USA. Email: mgutierrez@lymphoma.org; Bruce D. Cheson, MD, FACP, FAAAS, FASCO. Editor-in-Chief, *Annals of Lymphoma*; Member and Past-Chair, Lymphoma Research Foundation Scientific Advisory Board; Professor of Medicine; Head of Hematology; Deputy Chief, Division of Hematology-Oncology; Fellowship Program Director, Georgetown University Hospital, Lombardi Comprehensive Cancer Center, Washington, DC, USA. Email: bdc4@georgetown.edu.

LYMPHOMA
RESEARCH • FOUNDATION

Annals of Lymphoma forms partnership with *Lymphoma Research Foundation*, the nation's largest non-profit organization devoted exclusively to funding lymphoma research. Through this partnership, we aim to establish more direct lines of communication between the patient and research communities, a connection which will serve to strengthen the entire lymphoma community for the benefit of all.

3. Editor-in-Chief



Bruce D. Cheson, MD, FACP, FAAS, FASCO
Professor of Medicine, Head of Hematology and Deputy
Chief, Hematology-Oncology at Georgetown University
Hospital, Lombardi Comprehensive Cancer Center,
Washington DC, USA

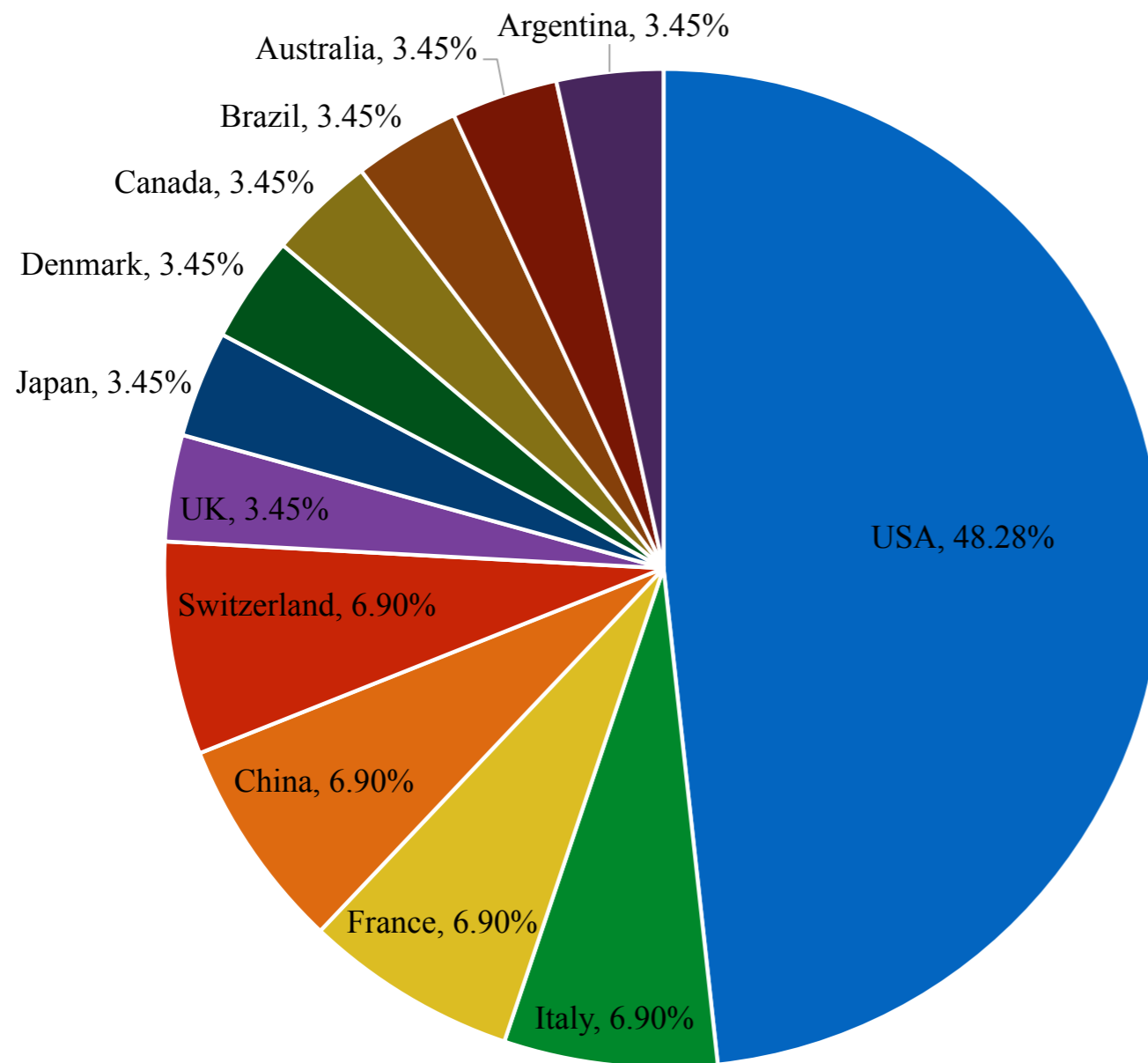
4. Message from the Editor-in-Chief

On behalf of the editorial team, we would like to express sincere appreciation for the enthusiastic and vigorous support and contributions from all editorial board members, guest editors, authors, reviewers and readers to this newly launched journal *Annals of Lymphoma*.



Bruce D. Cheson, MD, FACP, FAAS, FASCO
Professor of Medicine, Head of Hematology and Deputy Chief,
Hematology-Oncology at Georgetown University Hospital,
Lombardi Comprehensive Cancer Center,
Washington DC, USA

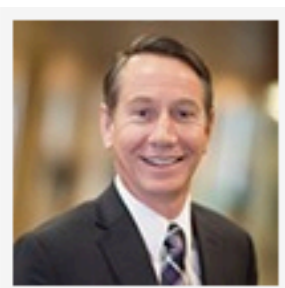
5. Geographical Distribution of Editorial Board Members



AOL has an editorial board team of 29 members from 12 countries. The majority of them are from the USA. They are the leading experts in the field of lymphoma research.

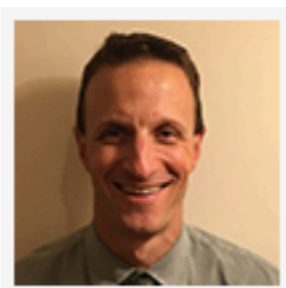
Note: Data updated on Dec 31, 2018.

6. Editorial Board Members



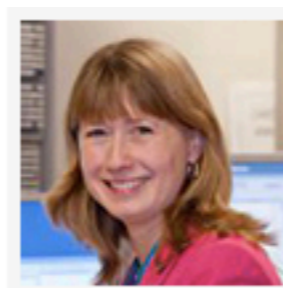
Stephen M. Ansell, MD, PhD

Professor of Medicine, Division of Hematology, Department of Internal Medicine, Mayo Clinic, Rochester, MN, USA



Philippe Armand, MD, PhD

Director of Lymphoma Clinical Research, Division of Hematologic Malignancies, Dana-Farber Cancer Institute, Harvard Medical School, Boston, MA, USA



Sally Barrington, MD

Professor of PET Imaging in PET Imaging Centre, Division of Imaging Sciences and Biomedical Engineering, King's College London, St. Thomas' Hospital, London, UK



Kristie A. Blum, MD

Professor in Division of Hematology, Department of Internal Medicine, The Arthur G James Comprehensive Cancer Center and The Ohio State University, Columbus, OH, USA



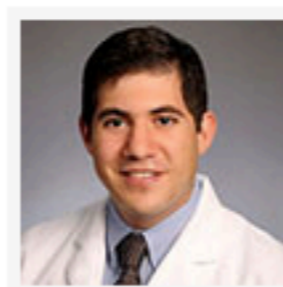
James CS Chim, MD, PhD

SH Ho Professor in Haematology & Oncology, Department of Medicine, Queen Mary Hospital, University of Hong Kong, Hong Kong, China



Tarec Christoffer El-Galaly, MD, DMSc

Associate Professor of Hematology, Consultant Hematologist, Aalborg University, Aalborg University Hospital, Aalborg, Denmark



Jonathon B. Cohen, MD, MS

Department of Hematology and Medical Oncology, Winship Cancer Institute, Emory University, Atlanta, GA, USA



Massimo Federico, MD

Professor of Medical Oncology at University of Modena and Reggio Emilia, Director of Oncology at Città di Lecce Hospital, Care & Research, Lecce, Italy

6. Editorial Board Members



Nathan Fowler, MD

Associate Professor of Medicine,
Department of Lymphoma/Myeloma,
UT MD Anderson Cancer Center,
Houston, TX, USA



Jonathan W. Friedberg, MD

Wilmot Cancer Institute, University of
Rochester Medical Center, Rochester,
NY, USA



Michele Ghilmini, MD, PhD

Medical Director in Oncology
Department, Oncology Institute of
Southern Switzerland (IOSI),
Bellinzona, Switzerland



Eric D. Hsi, MD

Professor of Pathology, Chair of
Department of Laboratory Medicine,
Section Head of Hematopathology,
Cleveland Clinic, Cleveland, OH, USA



Michel Meignan, MD, PhD

Professor of Nuclear Medicine and
Biophysics at the University of Paris
Est Créteil, Director of the imaging
group of the LYSA, Créteil, France



Michinori Ogura, MD, PhD

Director of Department of
Hematology, Head of Department of
Clinical Trial Management, Tokai
Central Hospital, Kakamigahara, Gifu,
Japan



Astrid Pavlovsky, MD

Medical Director Pavlovsky Center for
Hematology, Buenos Aires, Argentina



Mark Roschewski, MD

Associate Research Physician,
Lymphoid Malignancies Branch,
Center for Cancer Research,
Bethesda, MD, USA

6. Editorial Board Members



Gilles Salles, MD, PhD

Professor in Hematology Department, Chair of the Lymphoma Study Association (the LYSA), Hospices Civils de Lyon, Lyon-Sud Hospital, Pierre Bénite, France



Laurie H. Sehn, MD, MPH

Clinical Professor, British Columbia Cancer Centre for Lymphoid Cancer and University of British Columbia, Vancouver, Canada



John Seymour, MD, PhD

Integrated Department of Haematology, Peter MacCallum Cancer Centre and Royal Melbourne Hospital, Melbourne, Australia



Sonali M. Smith, MD

Associate Professor in Section of Hematology/Oncology, Director of Lymphoma Program, The University of Chicago, Chicago, IL, USA



Nelson Spector, MD, PhD

Professor of Medicine, Division of Hematology, Department of Internal Medicine, Federal University of Rio de Janeiro, Rio de Janeiro, Brazil



Julie M. Vose, MD, MBA

Neumann M. and Mildred E. Harris Professor of Internal Medicine; Chief, Division of Oncology and Hematology, University of Nebraska Medical Center, Omaha, NE, USA



Michael Luhua Wang, MD

Professor, Department of Lymphoma and Myeloma, Division of Cancer Medicine, University of Texas MD Anderson Cancer Center, Houston, TX, USA



Shuye Wang, MD

Professor in Department of Hematology, First Affiliated Hospital of Harbin Medical University, Harbin, Heilongjiang, China

6. Editorial Board Members



Michael E. Williams, MD, ScM

Byrd S. Leavell Professor of Medicine and Professor of Pathology; Chief, Hematology/Oncology Division; University of Virginia Health System, Charlottesville, VA, USA



Andrew D. Zelenetz, MD, PhD

Professor of Medicine, Chair of the Non-Hodgkin's Lymphoma Panel (NCCN), Department of Medicine, Memorial Sloan Kettering Cancer Center, New York, NY, USA



Pier Luigi Zinzani, MD, PhD

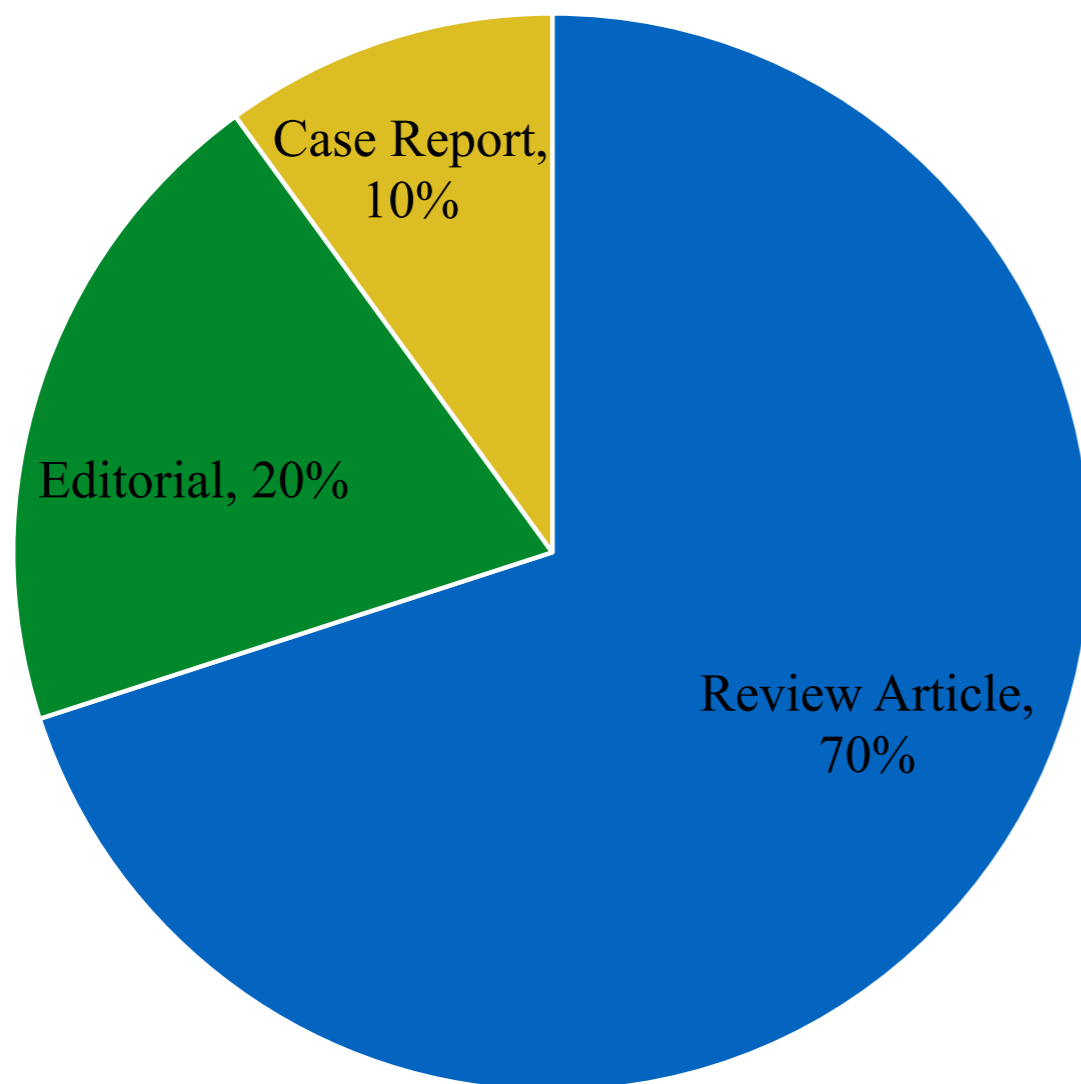
Professor of Hematology, Head of Lymphoma Group, Institute of Hematology, "L. e A. Seràgnoli", University of Bologna, Bologna, Italy



Emanuele Zucca, MD

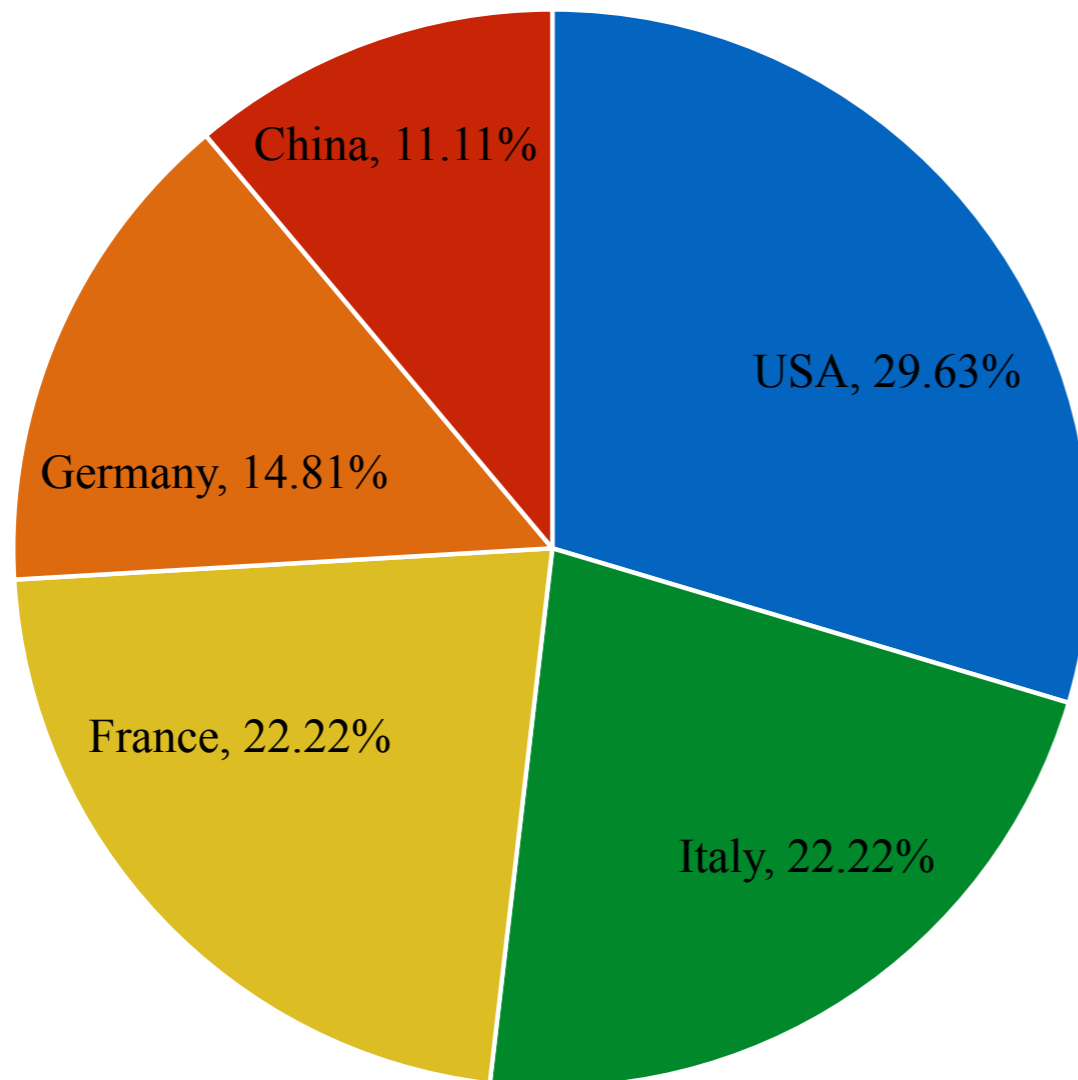
Oncology Institute of Southern Switzerland; Institute of Oncology Research, Bellinzona, Switzerland

7. Article Types of Articles Published in 2018



Most of the articles published in 2018 are Review Articles, taking up 70%.

8. Geographical Distribution of Authors in 2018



The majority of authors in 2018 come from the USA, followed by Italy and France.

9. Website Visits



Altogether 3,600 visitors in 2018. Readers who visited AOL website were from diverse countries, with the majority from the USA, followed by India, China and UK. Other countries include Japan, Italy, Germany, and Argentina, etc. (Note: Data collected from Google Analytics)

10. Focused Issues under Progress

Diffuse Large B-Cell Lymphoma

Guest Editor: Astrid Pavlovsky, MD

Medical Director Pavlovsky Center for Hematology, Buenos Aires, Argentina

Future Directions for Mantle Cell Lymphoma

Guest Editor: Martin Dreyling, MD, PhD

Department of Medicine III, University Hospital LMU Munich, Munich, Germany

The Development New Agents in T-cell Lymphoma

Guest Editors:

Michinori Ogura, MD, PhD, Tokai Central Hospital, Japan

Pier Luigi Zinzani, MD, PhD, Institute of Hematology, “L. e A. Seràgnoli”, University of Bologna, Bologna, Italy

11. Upcoming Focused Issues and Guest Editors

Marginal Zone Lymphoma

Guest Editors:

Emanuele Zucca, MD, Oncology Institute of Southern Switzerland

Francesco Bertoni, MD, Institute of Oncology Research, Switzerland

Rossi Davide, MD, Institute of Oncology Research, Switzerland

Follicular Lymphoma

Guest Editors:

Robert Marcus, MD, Kings College Hospital, London, UK

Laurie Sehn, MD, MPH, British Columbia Cancer Centre for Lymphoid

Cancer and University of British Columbia, Canada

T-cell Lymphoma

Guest Editor: Francine M. Foss, MD

Yale University School of Medicine, New Haven, CT, USA

12. Introduction of the Publisher AME

Our Publisher—
AME Publishing Company
www.amegroups.com

- Established in 2009
- Registered in Hong Kong
- 10 offices around the world

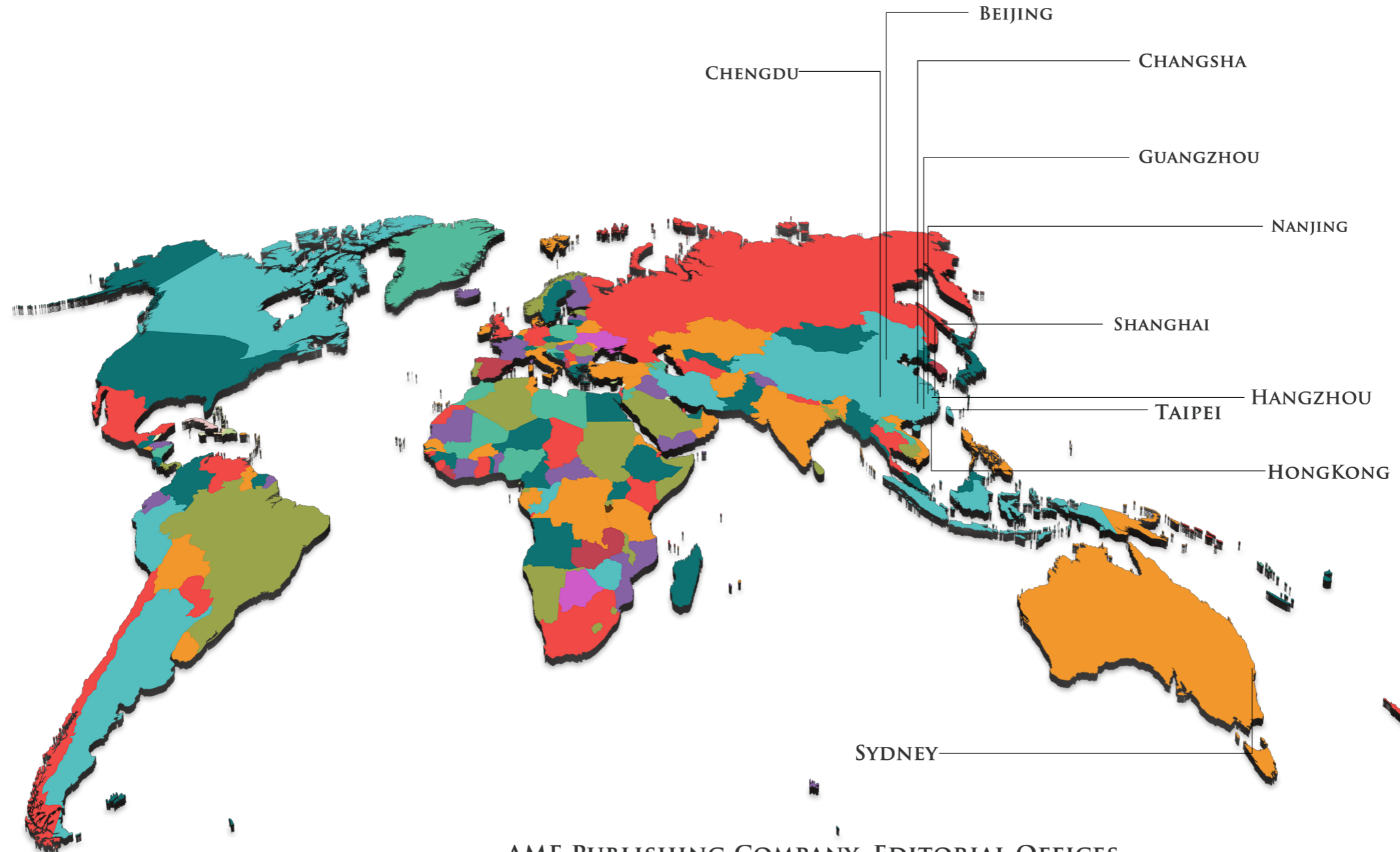
- 60+ peer-reviewed journals
 - 11 indexed in SCIE
 - 18 indexed in PubMed/PMC/MEDLINE

- 110+ Medical Books
 - 50+ Medical Books in English
 - 50+ Medical Books in Chinese



AOL ANNALS OF LYMPHOMA

A RISING HIGH-QUALITY JOURNAL RELATING TO LYMPHOMA RESEARCH



AME PUBLISHING COMPANY, EDITORIAL OFFICES

Email: hr@amegroups.com